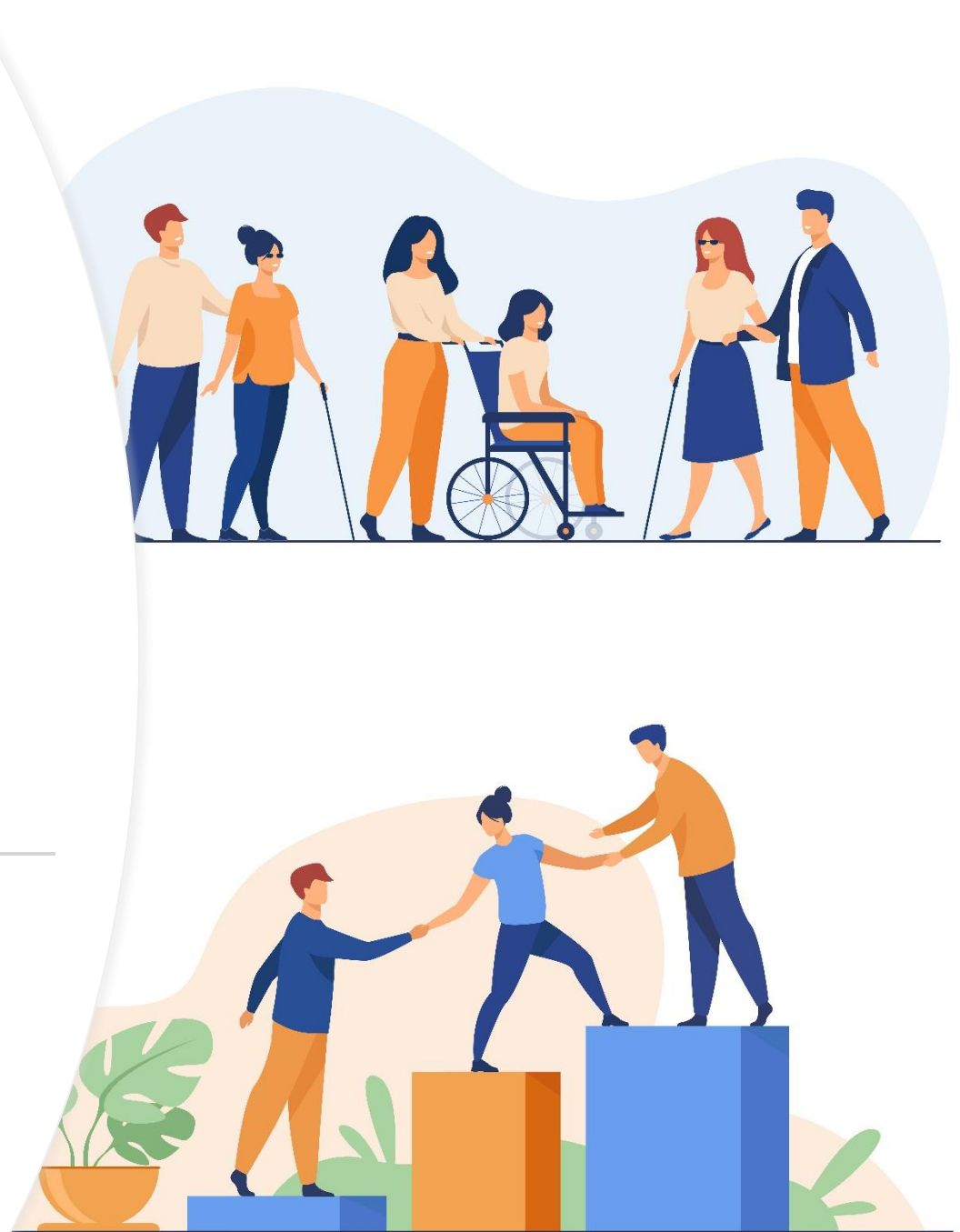


HOW DO PERSPECTIVES ON DISABILITY CHANGE DURING ONE YEAR OF VOLUNTEERING? AN ANALYSIS OF LATENT GROWTH CURVES

KARINA MEYER & ARIANE S. WILLEMS
UNIVERSITY OF GÖTTINGEN (GERMANY)

ECER 2021, Geneva
- preparatory material -





[Karina Meyer](#)
[Master of Education](#)



[Prof. Dr. Ariane S. Willems](#)

Hi!
Thank you for your interest in our research! This year at the ECER, we will present new analyses from our project [efbi](#). Beforehand, we are happy to share some information on the context of the project.



In Germany, when finishing school many young people decide not to go on with their educational career straight away. About 11% decide to take part in specific [state supported volunteering programs for young people](#) with a regular duration of one year.



School



Social service year,
work & travel...



University,
vocational training

What led us to take a closer look at those volunteers' perspectives on disability and inclusion?

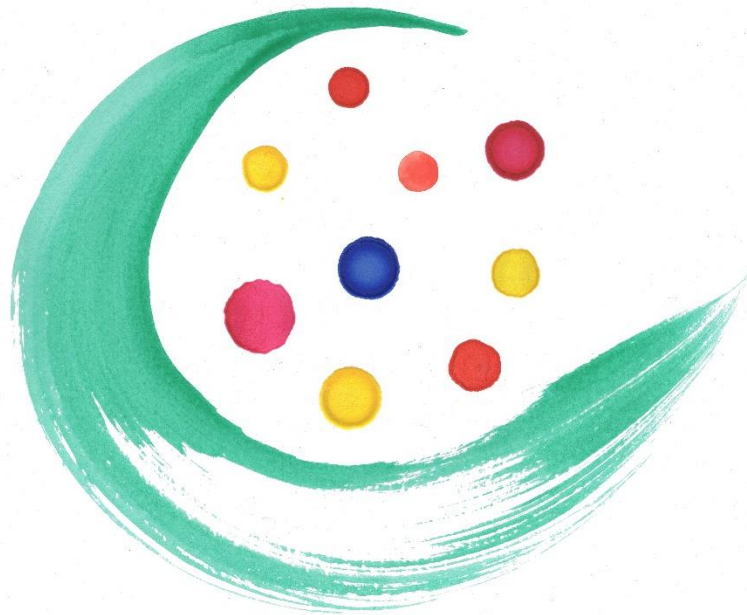
Lack of systematic research on such volunteering programs



For many young volunteers: first contact with people with a disability on a daily basis



Let's find out how perspectives on disability develop over the course of the year long volunteer program FSJ (Social voluntary year)



efbi

This is how [efbi](#) was born. It stands for

*Einstellungen von
FSJler*innen zu Behinderung
und
Inklusion*

*Attitudes of
young volunteers towards
disability and
inclusion*

Our sample consists of more than 500 young people doing a FSJ in Germany. The FSJ program include the following (it is, by the way, also open [for international volunteers](#)):



Working in social institutions



Seminars



Pedagogical support

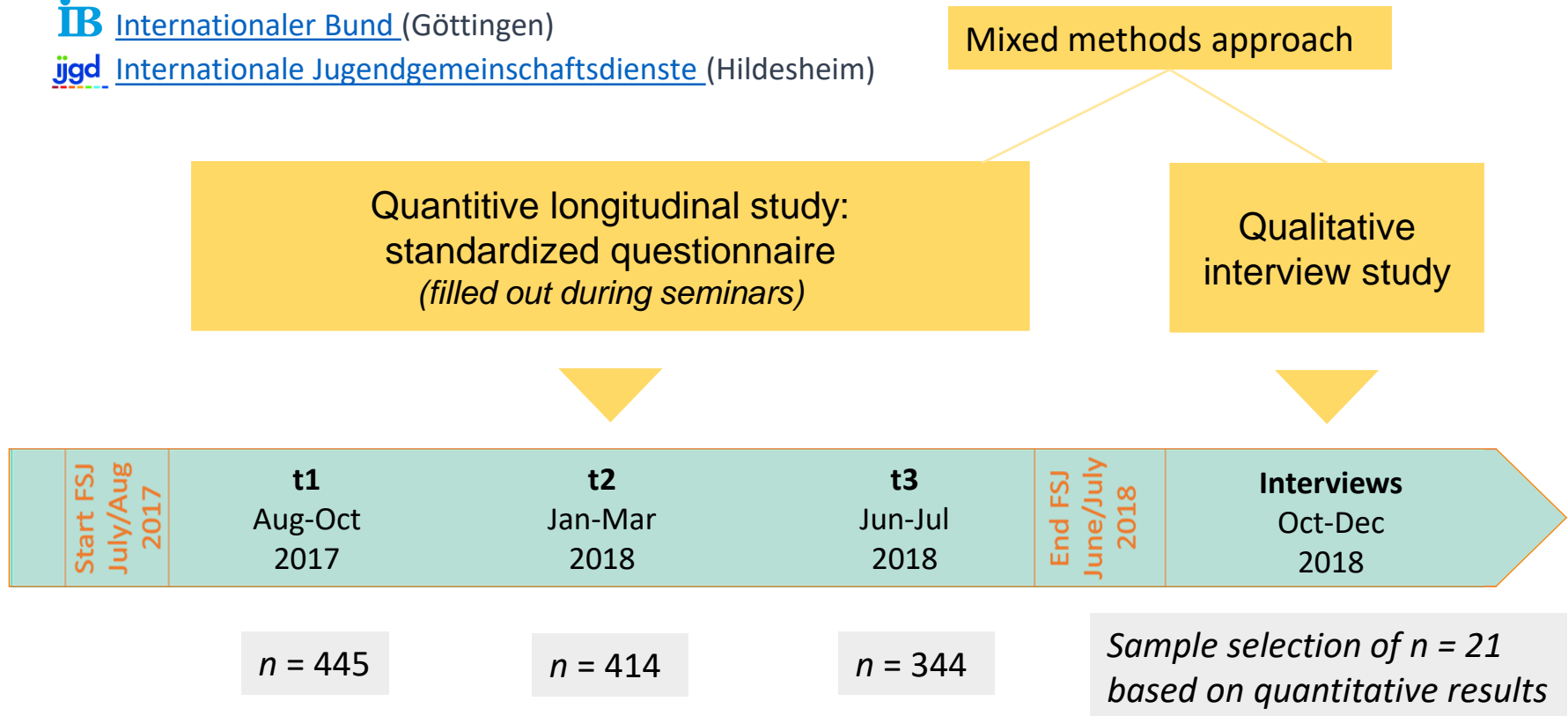


What did we do in [efbi](#) to collect empirical data?

Our cooperation partners:

[IB Internationaler Bund](#) (Göttingen)

[jgd Internationale Jugendgemeinschaftsdienste](#) (Hildesheim)



What do we know so far from analysing the data?

1

The questionnaire we developed for measuring attitudes towards disability and inclusion seems to have worked well, referring to results of analyses of factors, measurement invariance and intercorrelations between variables.

2

Our sample is quite heterogenous in respect to former experiences, motivation, specific volunteering institution, experiences during volunteering etc. That's why we decided to focus on methods that shed light on specific effects on the individual and/or subgroup level (→ *see next slide*)

What is the mean change in attitudes?

So what will expect you in [our presentation at the ECER?](#)

How do attitudes develop in subgroups?

Latent (class) growth analysis on attitudes towards disability

How much variance is there in the development of attitudes?

On what factors do specific developments depend?

Still here? Great! We hope to get in touch with you at our presentation at the ECER. In any case, if you are interested in further information on the project, please don't hesitate to [contact](#) us.



Wednesday,
08/09/2021
4:00 - 5:30pm



PS: For details on analyses conducted to date (sorry, so far only in German), check our publications or our [homepage](#) for updates.

- Meyer, K. & Willems, A. S. (in press). Verändern sich Einstellungen zu Behinderung durch Kontakterfahrungen und Bildungsseminare? Eine quantitative Längsschnittanalyse zu Freiwilligendiensten. In S. Fränkel, M. Grünke, T. Hennemann, D. Hövel, C. Melzer & K. Ziemer, S. Fränkel, M. (eds.), *Teilhabe in allen Lebensbereichen? Ein Blick zurück und nach vorn*. Bad Heilbrunn: Klinkhardt.
- Willems, A. S., Meyer, K. & Frechen, M. (in press). *Skalendokumentation des Projekts EFBI – Beschreibung und Entwicklung von Einstellungen von FSJler*innen zu Behinderung und Inklusion*. Göttingen: Universitätsverlag (Göttinger Beiträge zur erziehungswissenschaftlichen Forschung).
- Meyer, K. & Willems, A. S. (in press). Verändern sich Einstellungen zu Behinderung im Verlauf von Freiwilligendiensten? Eine Längsschnittanalyse latenter Profile. In A. S. Willems (ed.), *"Warum und Wozu?" Motivation und Einstellung in (außer)schulischen Bildungsprozessen*. Göttingen: Universitätsverlag (Erziehungswissenschaftliche Schriften).
- Frechen, M., Meyer, K. & Willems, A. S. (in press). Wie verändern Kontakt und Kontakt(un)sicherheit Einstellungen gegenüber Menschen mit Behinderung? Befunde einer Studie zum Freiwilligen Sozialen Jahr. In A. S. Willems (ed.), *"Warum und Wozu?" Motivation und Einstellung in (außer)schulischen Bildungsprozessen*. Göttingen: Universitätsverlag (Erziehungswissenschaftliche Schriften).

PICTURE CREDITS

1. `Flyer Vektor erstellt von macrovector - de.freepik.com`
2. `Abstrakt Vektor erstellt von pch.vector - de.freepik.com`
3. `Schule Vektor erstellt von upklyak - de.freepik.com`
4. `Schule Vektor erstellt von macrovector - de.freepik.com`
5. `Menschen Vektor erstellt von pch.vector - de.freepik.com`
6. `Schule Vektor erstellt von pch.vector - de.freepik.com`
7. `Geschäft Vektor erstellt von rawpixel.com - de.freepik.com`
8. `Menschen Vektor erstellt von pikisuperstar - de.freepik.com`
9. `Menschen Vektor erstellt von pch.vector - de.freepik.com`
10. `Menschen Vektor erstellt von pch.vector - de.freepik.com`
11. `Technologie Vektor erstellt von rawpixel.com - de.freepik.com`